

Reinforcement worksheet 1

- ★ Find six differences between Channel TV 1 and TV 2. Write your answers.

CHANNEL TV1

1:00	The News
1:45	Crazy Cat cartoons
2:15	School Friends <i>Episode 5</i>
2:45	Golf
3:00	The Rosetta Stone
3:50	What do you know? (quiz)

CHANNEL TV2

1:30	The News
1:45	Cool Cat cartoons
2:15	School Friends <i>Episode 3</i>
2:45	Football
3:15	The Rosetta Stone
3:50	The Weather

- On TV1 the news is on at one o'clock. On TV2 the news is on at half past one.
- On TV1 Crazy Cat cartoons is on at quarter to two. On TV2 _____ is on at _____.
- _____
- _____
- _____
- _____

Reinforcement worksheet 2

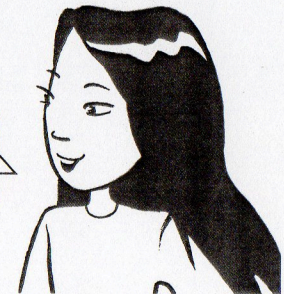
- 1 Complete the sentences and cross out the words on the TV.

- The news _____ tells us what is happening in the world.
- TV1 and TV2 are the names of two c _____.
- A TV competition where people answer questions is called a q _____.
- We can watch football on a s _____ programme.
- Many cartoon characters are not people. They are a _____.
- A story that you watch each week is called a s _____.
- Some documentaries are not b _____ . They are interesting.
- This programme tells us if it is raining or snowing. It is called the w _____.
- You have to t _____ the TV when you want to watch it.
- The parts of a series that you watch each week are called e _____.

channels	cameraman	screen	boring
quiz	action film	sports	episodes
music video	weather	animals	series
funny	news	cartoon	turn on

- 2 Which four crossed out words form a line? Use the first letters to complete what Shari is saying.

Programmes about dinosaurs are the _____ !



1 Draw lines to each city.



New York, USA



London, UK



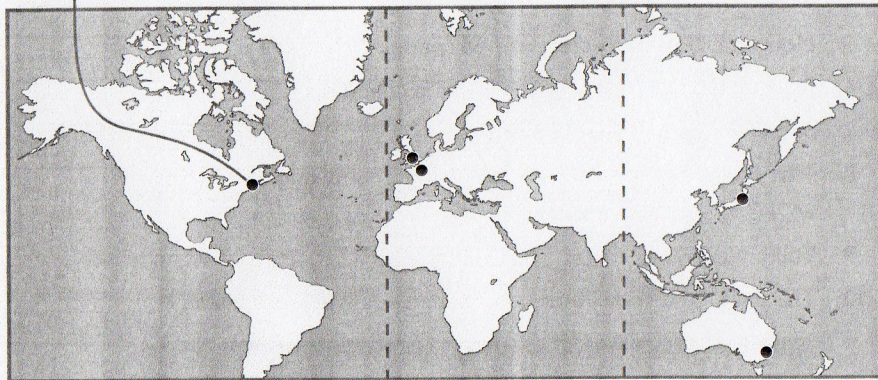
Paris, France



Tokyo, Japan



Sydney, Australia



← MORNING → ← AFTERNOON → ← NIGHT →

2 Write the time in each city.

- New York: *It's quarter past six in the morning.*
- London:
- Paris:
- Tokyo:
- Sydney:

3 What time is it in these cities? Write your answers.

- It's quarter past three in London. What time is it in Paris?
It's quarter past four in Paris.
- It's ten past three in New York. What time is it in London?
It's ten past
- It's quarter to nine in Tokyo. What time is it in Sydney?
It's
- It's twenty past seven on Friday morning in Sydney. What day is it in London?
.....

1 Read the TV Guide and choose words from the box for each channel.







series cartoon documentary the weather
quiz music video comedy

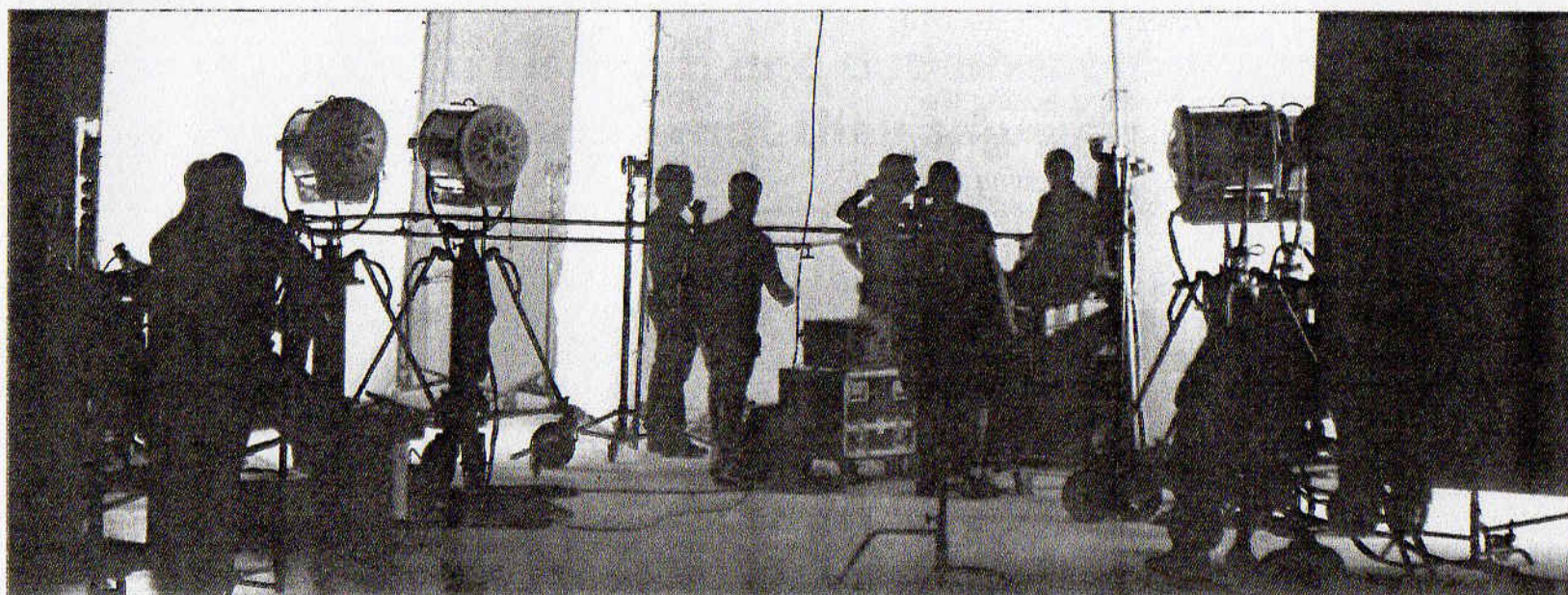
Children's TV Guide

Channel 1	Channel 2	Channel 3	Channel 4	Channel 5
4:00–5:00 Dolphin and whale special	4:00–4:30 Clowntime	4:00–4:45 Happy street	4:00–5:40 Supermum 2	4:00–4:15 What do you know?
Do you know that dolphins never sleep? In today's programme we learn all about these interesting animals: where they live, what they eat and how clever they are.	Millie and Maisie the clowns are so funny! Why are they throwing paint and water? Why are they jumping up and down with eggs on their heads? Watch today's programme to find the answers.	Last week Sam and Jane found an old map in the school library. Where did it come from? Where can it take them? This week's episode answers these questions and lots more!	Now that Supermum's children are older, she's helping people with their animals! Have you lost your dog? Supermum can fly over the city and find it. She's fast and she's strong. The drawings in this film are great!	This programme is so exciting that you want it to be longer! Six people answer very difficult questions. The winner gets a holiday in Egypt.

documentary

2 Read again and choose the right answer.

- How long is *Supermum 2*?
a) half an hour b) an hour and a quarter c) an hour and forty minutes
- What time does *Happy Street* finish?
a) at quarter to five b) at quarter past five c) at quarter to four.
- Which of these things don't the clowns use?
a)  b)  c) 
- Dolphins are: a) not clever b) always awake c) very big birds
- In *What do you know?* the winner gets:
a)  b)  c) 



1 What's your favourite TV series? Do you know how it's made?

A TV series is a story which we watch in many parts (or *episodes*). Sometimes we can watch one, two or more episodes in one week. Usually a TV series starts with an idea. If a producer likes the idea, he/she talks to a screenwriter, who writes the story. Then the producer speaks to a director, who has to decide where to film the series and what happens in each scene. Next the producer has to find money to pay for the series. After the film is made, the editors cut the film and join it together. Then the producer has to sell the series to TV channels around the world. And then we watch it!

Who else makes the TV series?

You can often see a list of people who made the series at the end of a TV programme: the casting director, actors, camera crew and designers. Who are these people and what do they do?

Every series needs a good technical team, for example, a camera crew (the people who film the series). The TV series also needs people to manage the sound, lighting and special effects. Lots of artists and designers also help to make the series. They have to prepare the make-up and clothes for the actors, or design the set.

Of course, a good TV series needs good actors! They play the people in the series. The casting director has to choose the actors. Famous actors are expensive, so the casting director can't always choose famous people for the series!

2 Match the person with the job.

- | | |
|------------------------|--|
| 1 The editor | a films the series. |
| 2 The screenwriter | b finds the money for the series. |
| 3 The producer | c chooses the actors. |
| 4 The casting director | d cuts the film and joins it together. |
| 5 The director | e decides what happens in each scene. |
| 6 Actors | f prepare the make-up and clothes. |
| 7 Designers | g play the people in the series. |
| 8 The camera crew | h writes the story. |